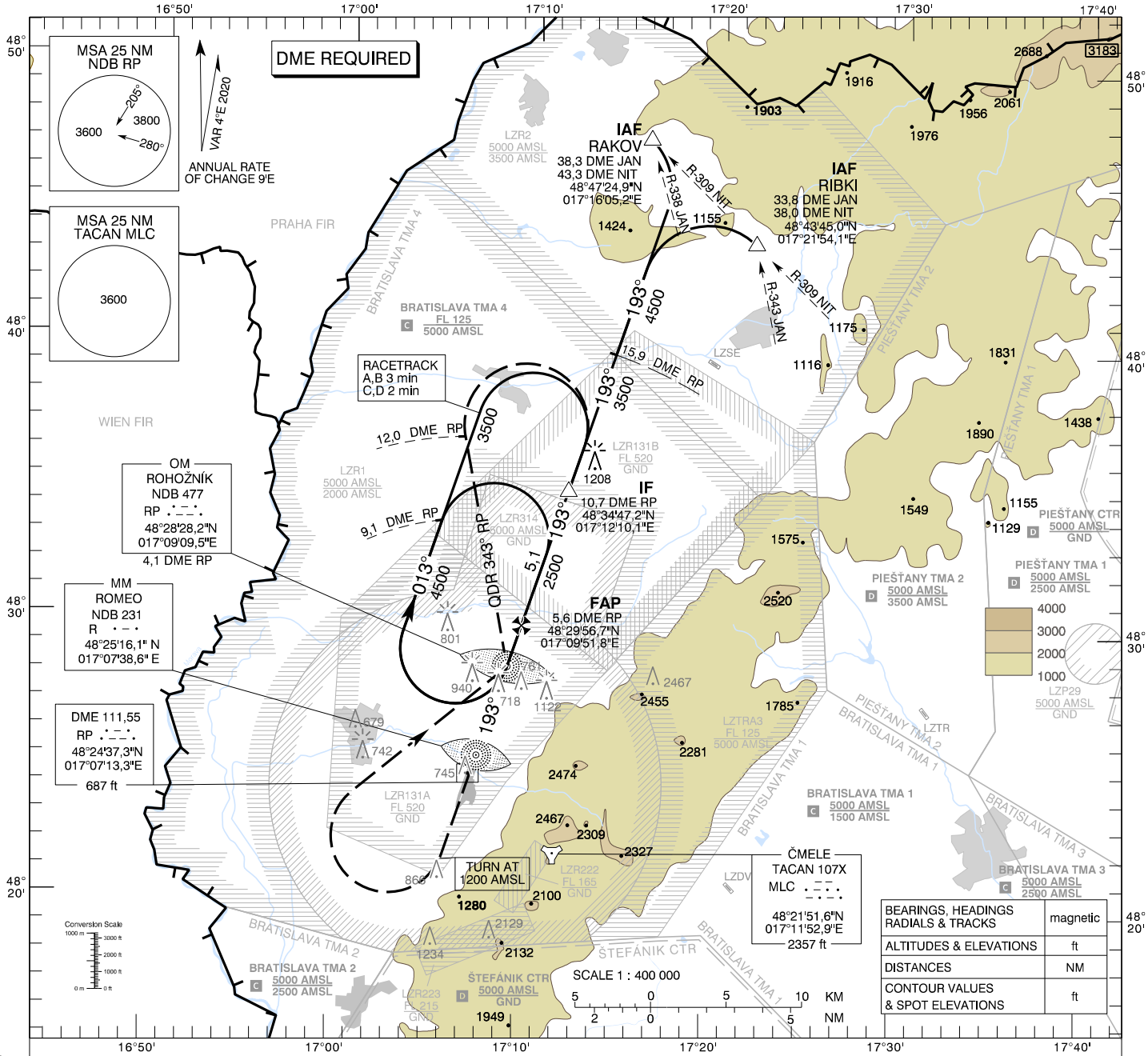


**INSTRUMENT  
APPROACH  
CHART - ICAO**

**TRANSITION ALTITUDE**  
10 000 ft  
AD ELEV 689 - 25 hPa  
THR RWY 19 ELEV 686 - 25 hPa

**MALACKY PRECISION 127,150**  
**MALACKY RADAR 120,750 (259,625)**  
**MALACKY TOWER 129,575 (120,750)**

**MALACKY (LZMC)  
PAR RWY 19  
ACFT CAT A/B/C/D**



**MISSED APPROACH**

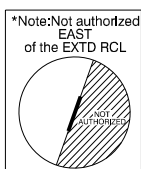
Climb STRAIGHT AHEAD, at 1200 AMSL turn RIGHT to NDB RP, climbing to 3500 AMSL. At NDB RP turn LEFT to track 343° (QDR 343° RP), at 12 DME RP turn RIGHT to join the hold or initiate another approach. MAX IAS 185 kt. No turn before MM.

**RDH 56,8**

THR RWY 19 ELEV 686 - 25 hPa

NM to/from THR RWY 19

OCA (OCH)	ASC	A	B	C	D
Straight - in Approach	2,5%	ft 951 (265)	963 (277)	971 (285)	982 (296)
Circling (* see Note)		ft 1120 (431)	1190 (501)	1650 (961)	1810 (1121)
VIS		m 1800	2800	3600	4600



DME RP	NM	7,0	6,0	5,0	4,0	3,0	2,0	1,0
ALTITUDES	ft	2953	2624	2296	1970	1645	1323	1001

Ground speed	kt	70	90	100	120	140	160	180
Rate of descent (5,2%)	ft/min	372	478	531	637	743	849	955

CHANGES: MAG VAR, MAG BRG, RDH; OCA(OCH) Straight - in Approach; IF and FAP position